

## 2023 Honda Civic Hatchback Type-R L4-2.0L Turbo (K20C1)

Vehicle > Maintenance > Fluids > Fluid - M/T > Service and Repair > Procedures

### MTF INSPECTION AND REPLACEMENT (M/T, TYPE-R)

## MTF Inspection and Replacement

---

## Inspection

How to use this manual.

### NOTICE

Keep all foreign particles out of the transmission.

#### 1. MTF Level - Check

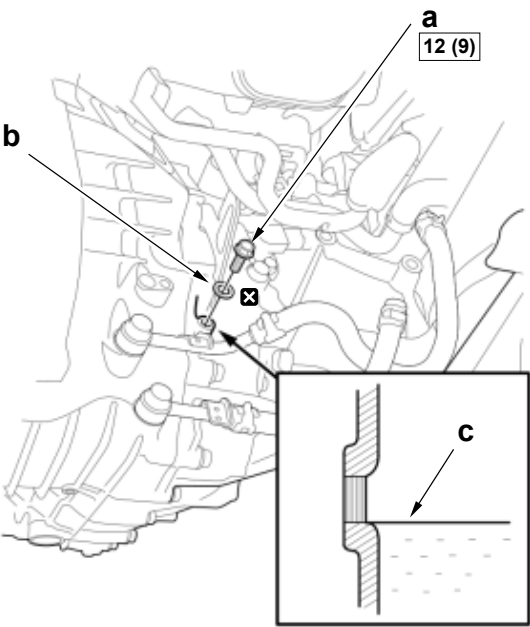
### ■ Preconditions

- Vehicle Lifted
- Engine Undercover Plate Removed

---

### ■ Procedure/Specifications

1. Remove the oil check bolt (a) and the sealing washer (b).



2. Check the MTF level.

Specifications

Position	Specification
c	The transmission fluid is same level with the oil check bolt hole.

NOTICE

If necessary, add the transmission with the recommended fluid.

3. Reinstall the oil check bolt with a new sealing washer.

■ Result

- If the fluid level is below the proper level, check for fluid leaks at the transmission. If a problem is found, fix it before filling the transmission with the transmission fluid.

Replacement

**NOTICE**

Keep all foreign particles out of the transmission.

## 1. MTF - Replace

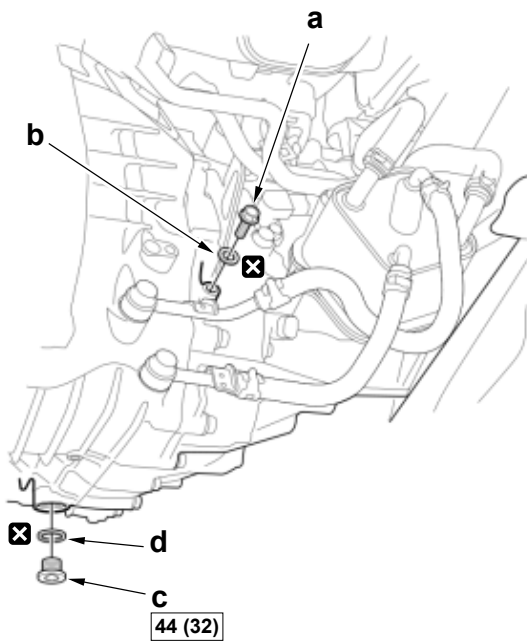
### ■ Preconditions

- Vehicle Lifted
- Engine Undercover Plate Removed
- Air Cleaner Housing Removed

### ■ Procedure/Specifications

1. Remove the oil check bolt (a) and the sealing washer (b). (Figure 1)

Figure 1



2. Remove the drain plug (c) and the sealing washer (d), and drain the MTF. (Figure 1)

3. Install the drain plug with a new sealing washer. (Figure 1)

---

4. Remove the filler plug (e). (Figure 2)

Figure 2

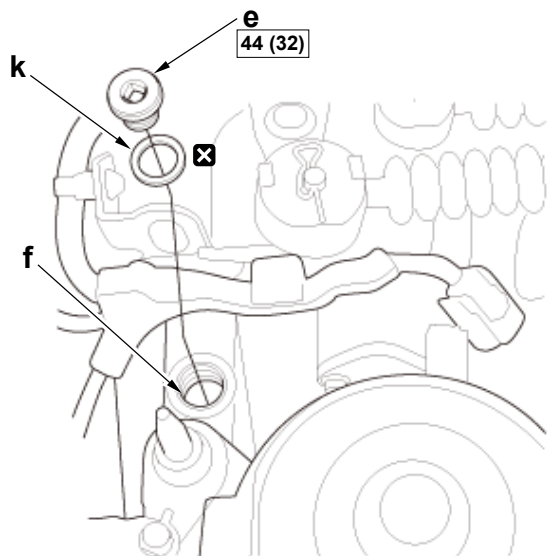
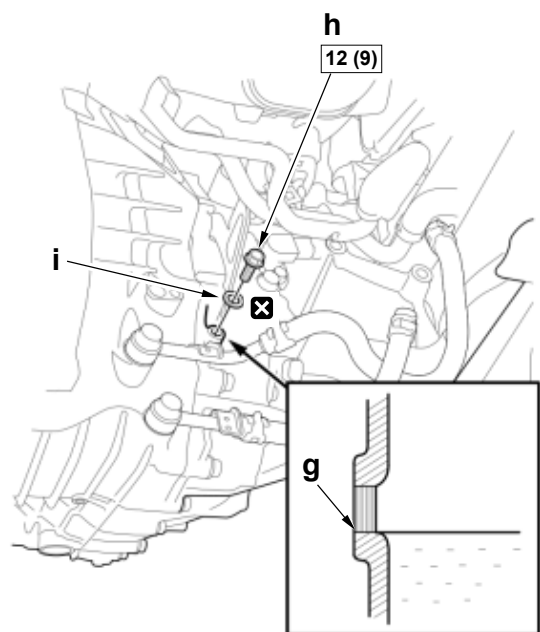


Figure 3



5. Refill the transmission with the recommended fluid through the filler plug hole (f), until the transmission fluid overflows from the oil check bolt hole (g). (Figure 2 and 3)

Fluid Details

Type
Genuine Honda Manual Transmission Fluid (MTF)

Fluid Amount Details

Operation	Specified Amount
At Fluid Change	2.2 L (2.3 US qt)
At Overhaul	2.6 L (2.7 US qt)

6. After the fluid stops overflowing, install the oil check bolt (h) with a new sealing washer (i). (Figure 3)
7. Install the filler plug with a new sealing washer (k). (Figure 2)

■ After Replacement

1. MTF Level Check

NOTE: Refer to the Check procedure for more details.

2. Maintenance Minder Reset (With Maintenance Minder System)

If the Maintenance Minder requires the MTF to be replaced, reset the Maintenance Minder with the gauge (see "Resetting the Maintenance Minder"). If the Maintenance Minder did not require the MTF to be replaced, reset the Maintenance Minder with the HDS (see "Resetting the Individual Maintenance Items").